

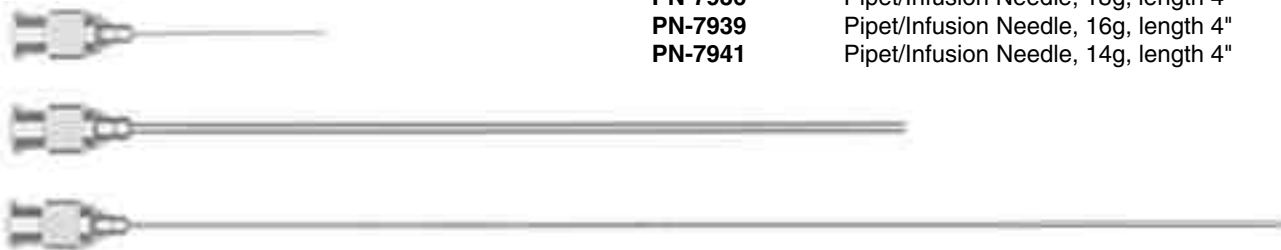
# Vascular Access



<b>IN-10</b>	Polyethylene Tubing, .011" ID x .024" OD, 10ft Lengths
<b>IN-10N</b>	Introduction needle, sterile, 19g x 1"
<b>IN-10C</b>	Infusion Cannula, blunt, 30g x 1"
<b>IN-20</b>	Polyethylene Tubing, .015" ID x .043" OD, 10ft Lengths
<b>IN-20N</b>	Introduction needle sterile, 16g x 1"
<b>IN-20C</b>	Infusion Cannula, blunt, 27g x 1"
<b>IN-50</b>	Polyethylene Tubing, .023" ID x .038" OD, 10ft Lengths
<b>IN-50N</b>	Introduction needle, sterile, 16g x 1"
<b>IN-50C</b>	Infusion Cannula, blunt, 24g x 1"



<b>PN-7922</b>	Pipet/Infusion Needle, 30g, length 1"
<b>PN-7925</b>	Pipet/Infusion Needle, 27g, length 1"
<b>PN-7930</b>	Pipet/Infusion Needle, 24g, length 1"
<b>PN-7933</b>	Pipet/Infusion Needle, 20g, length 4"
<b>PN-7936</b>	Pipet/Infusion Needle, 18g, length 4"
<b>PN-7939</b>	Pipet/Infusion Needle, 16g, length 4"
<b>PN-7941</b>	Pipet/Infusion Needle, 14g, length 4"



<b>RS-5255</b>	SINGLEY heart holding forcep length 6"
----------------	--



RS-5255 Shown



**IN-517**      Splitable Introducer Cannula  
17GA x 22mm  
OD 1.50mm  
I D 1.34mm  
red



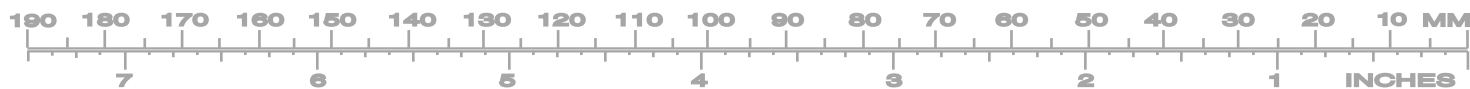
**IN-520**      Splitable Introducer Cannula  
20GA x 17mm  
OD 0.95mm  
I D 0.75mm  
green



**IN-522**      Splitable Introducer Cannula  
22GA x 17mm  
OD 0.70mm  
I D 0.50mm  
blue



**1-800-424-2984**  
[www.roboz.com](http://www.roboz.com)



**32 ga micro injection needles uses:**

portal vein injections  
thymus injections  
bile duct injections  
blood/fluid extractions

**Advantages:**

potential for clotting is reduced  
reduces trauma  
greater control of injection site  
greater volume control

**IN-900**

Micro Injection Needle  
.009" OD x .003" ID  
32 ga  
needle length 10mm  
use with IN-910

straight

**IN-905**

45 deg angle

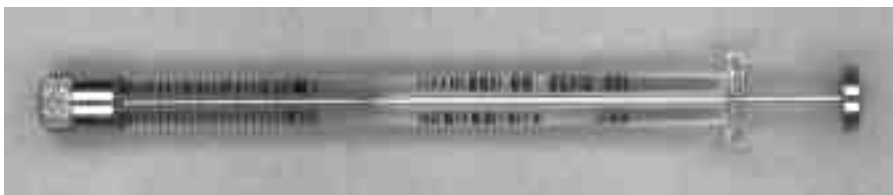
**IN-910****IN-910**

Syringe  
plastic  
Volume 1mm  
for use with IN-900  
and IN-905 needles

Photo Not Available For IN-940

**IN-940**

Micro Injection Needle  
straight  
.009" OD x .003" ID  
32 ga  
needle length 12mm  
use with IN-950

**IN-950****IN-950**

Syringe  
glass  
5 microliters  
for use with IN-940  
needles





### Specifications

Pump Type	Infusion
Max.No. Syringes	One
Syringe Size	.5μL to 60mL
Linear Force	22lbs.
Min Flow Rate	> .1μL/hr
Max Flow Rate	8.87mL/min
Accuracy	± 3%
Reproducibility	± 1%
Power	9Volt DC @ 1000mA
Dimensions	9.0" x 5.75" x 4.93"
Weight	3.9 lbs.
Steps per Revolution	400

### IN-1000 Advance Infusion Pump

The **Advance Infusion Pump Series 1200** is a simple, accurate, affordable single syringe pump. Easily input the syringe diameter, volume, and time into the large number keypad that no other pump on the market has and let Advance do the rest.

No need to scroll through long lists of syringe sizes and infusion rates again with Advance!

### IN-1010 Advance Infusion Table

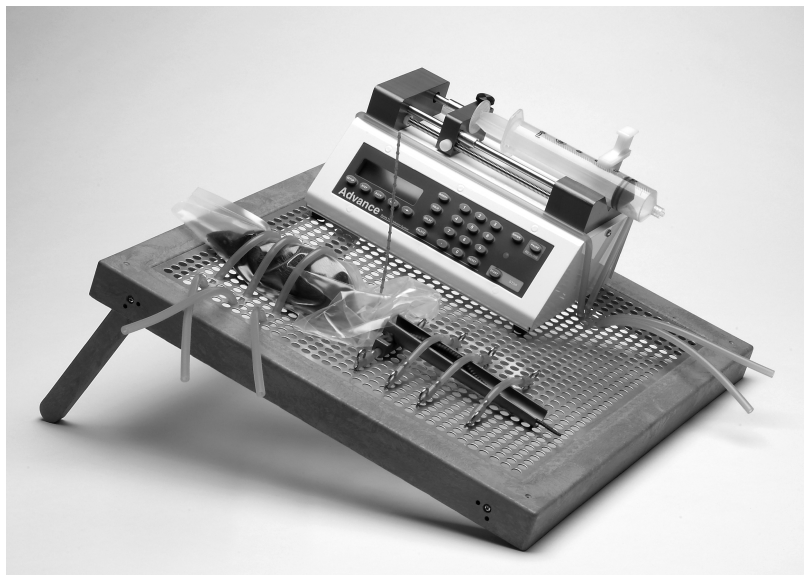
The **Advance Infusion Table** is the latest design in tail infusions for rats. This unique setup has allowed for tail infusions lasting up to three hours.

#### Features

- 4 folding legs for optional angled display and compact storage
- Easy customization using the silicone tubing and perforated table top
- Cage washable

#### Dimensions

15 3/4" x 15 3/4" square table top (40cm x 40cm)  
Height with legs open, 6 1/2" (16.5cm)



### COMPARISON OF MILLIMETERS TO INCHES

MM	INCHES	MM	INCHES
0.33	.013	6	.236
0.5	.020	6.33	.249
0.67	.026	6.5	.256
1	.039	6.67	.263
1.33	.052	7	.275
1.5	.059	7.33	.288
1.67	.066	7.5	.295
2	.079	7.67	.302
2.33	.092	8	.315
2.5	.098	8.33	.328
2.67	.105	8.5	.335
3	.118	8.67	.341
3.33	.131	9	.354
3.5	.138	9.33	.367
3.67	.144	9.5	.374
4	.157	9.67	.380
4.33	.170	10	.394
4.5	.177	10.33	.407
4.67	.184	10.67	.420
5	.197	11	.433
5.33	.210	11.33	.446
5.5	.216	11.67	.459
5.67	.223	12	.472

### COMPARISON OF INCHES TO MILLIMETERS

INCHES	MM	INCHES	MM
1/32	0.79	17/32	13.49
1/16	1.59	9/16	14.29
3/32	2.38	19/32	15.08
1/8	3.18	5/8	15.88
5/32	3.97	21/32	16.67
3/16	4.76	11/16	17.46
7/32	5.56	23/32	18.26
1/4	6.35	3/4	19.05
9/32	7.14	25/32	19.84
5/16	7.94	13/16	20.64
11/32	8.73	27/32	21.43
3/8	9.53	7/8	22.22
13/32	10.32	29/32	23.02
7/16	11.11	15/16	23.81
15/32	11.91	31/32	24.61
1/2	12.7	1"	25.4

### COMPARISON OF INCHES TO CENTIMETERS

INCHES	CM
1	2.54
2	5.08
3	7.62
4	10.16
5	12.7
6	15.24
7	17.78
8	20.32
9	22.86
10	25.40
11	27.94
12	30.48
13	33.02
14	35.56
15	38.10

### COMPARISON OF CENTIMETERS TO INCHES

CM	INCHES
1	.3937
2	.7874
3	1.1811
4	1.5748
5	1.9685
6	2.3622
7	2.7559
8	3.1496
9	3.5433
10	3.937
20	7.8740
30	11.811
40	15.748

